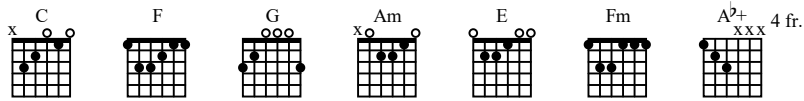


DON'T LOOK BACK IN ANGER

As recorded by Oasis

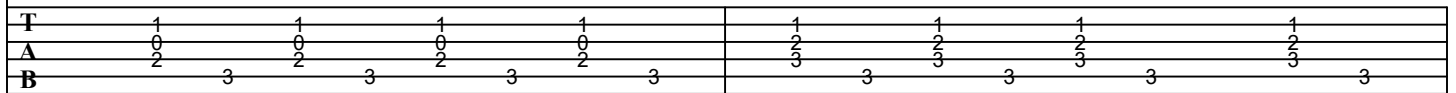
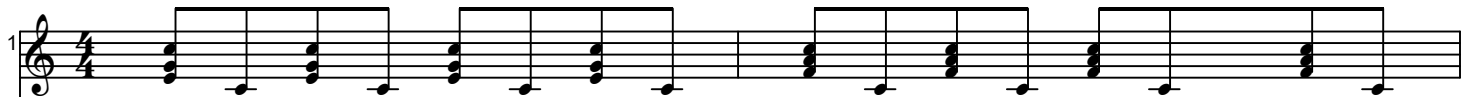
(From the 1995 Album (WHAT'S THE STORY) MORNING GLORY)



A Intro

$\text{♩} = 84$
C

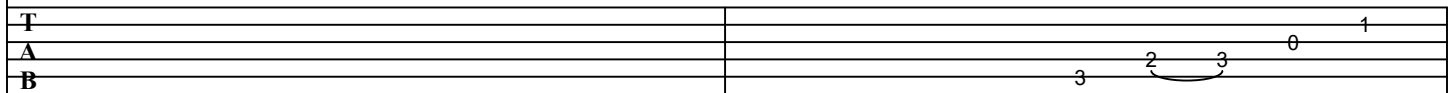
F



Gtr I

mf

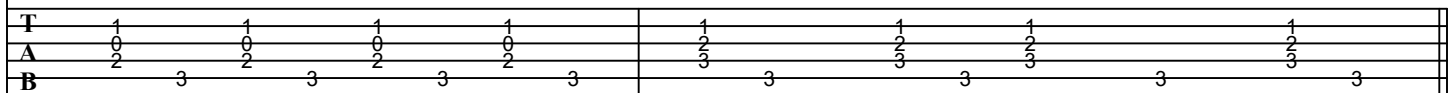
let ring



H

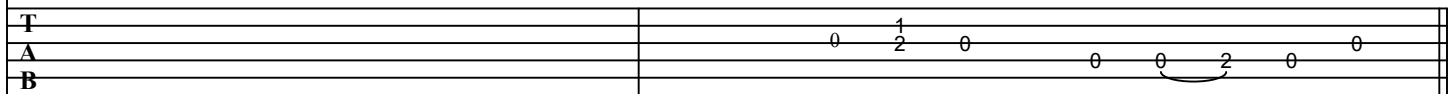
C

F



let ring

let ring



H

B Verse

5

Gtr III *mp* C G Am E

Gtr I *mf*

7

F G C Am G

9

C G Am E

11

F G C Am G

sl.

sl.

The musical score for "The Rose Tree" is presented in three systems. The first system includes a guitar part with chords F, Fm, and C, and a voice part with lyrics "The rose tree in the garden". The second system continues the guitar part with chords F and Fm, and the voice part with lyrics "The rose tree in the garden". The third system shows the guitar part with chords F and Fm, and the voice part with lyrics "The rose tree in the garden". The piano accompaniment is shown in a separate staff with fingerings and articulations.

The musical score for 'The Rose Tree' is presented in two systems. The first system shows the beginning of the piece, with a treble clef staff and a three-part vocal harmony (T, A, B) below. The melody is marked with a 'Full' breath mark. The vocal parts are numbered 1-4 and include a 'H' (half note) and 'P' (pedal point) section.

[C] Chorus

Chorus

25

let ring

let ring

let ring

let ring

let ring

let ring

28

let ring

let ring

30

let ring

let ring

let ring

let ring

32

let ring

let ring

1.

1/4

sl.

sl.

Chorus

25

let ring

let ring

let ring

let ring

let ring

let ring

28

let ring

let ring

30

let ring

let ring

let ring

let ring

32

let ring

let ring

1.

1/4

sl.

sl.

2.

C Am G

35

T

A 5

B

H

0 1 1 1 0 0 5

3 2 2 0 0 2 2 2 0 0 0 5

D Guitar Solo

F Fm C

37

T

A 7 (7) 7 (7) 7 (7) 5 5

B

1/2 1/2 1/2 Full

H H

F Fm C

39

T

A 7 (7) 7 (7) 7 (7) 5 5

B

1/2 1/2 1/2

H H sl. sl.

F Fm C

41

T

A 7 (7) 7 (7) 5 7 5

B

1/2

1 5 3 5 7 5 7 5 7 5

sl. P sl. H

7 9 8 8 10 8 8 8 10 8

43

G

A[#]

T

A

B

H H H H H H P H H H *sl.*

[illegible]

D.S. al Coda

47

Full

Full

Full

Full

Full

T

A

B

sl.

Am E F G

51

let ring let ring let ring let ring

T 0 0 0 0 0 0 0 1 1 1 3 3 3
A 1 1 1 1 1 1 1 2 2 2 4 4 4
B 0 2 2 2 2 2 2 3 3 3 5 5 5

sl.

C Am G C G

53

let ring let ring

T 0 1 0 0 1 1 1 0 3 3 3 3 0 0 0 0 3 3 3
A 0 0 0 0 2 2 2 0 0 0 0 0 0 0 0 0 0 0 0
B 3 2 2 0 0 2 2 2 5 5 5 5 3 2 2 2 0 0 0

Am F Fm

55

mp *mp*

T 1 1 1 1 1 1 1 1 1 1 1 1 1 1 1 1 1 1 1
A 2 2 2 2 2 2 2 2 2 2 2 2 2 2 2 2 2 2 2
B 0 0 0 0 0 0 0 0 0 0 0 0 0 0 0 0 0 0 0

C G

58

1/2 (7)

T 1 1 1 1 1 1 1 1 1 1 1 1 1 1 1 1 1 1 1
A 2 2 2 2 2 2 2 2 2 2 2 2 2 2 2 2 2 2 2
B 0 0 0 0 0 0 0 0 0 0 0 0 0 0 0 0 0 0 0

H H

Am E F Fm C

rit.

♩ = 54

Full

T
A
B

7 7 5 5 7 5 7 5 3 5 5 7 5 7

H H sl. sl.

Detailed description: The image shows a musical score for the song 'Don't Look Back in Anger' by Oasis, page 8 of 8. The score is written for guitar and bass. The guitar part is in treble clef and the bass part is in bass clef. The guitar melody is marked with chords Am, E, F, Fm, and C. The bass line is marked with 'H' (harmonic) and 'sl.' (slide) instructions. The tempo is 54 beats per minute. The score includes a 'Full' instruction for the guitar melody. The bass line is marked with 'H' (harmonic) and 'sl.' (slide) instructions. The score is generated using the Power Tab Editor by Brad Larsen.